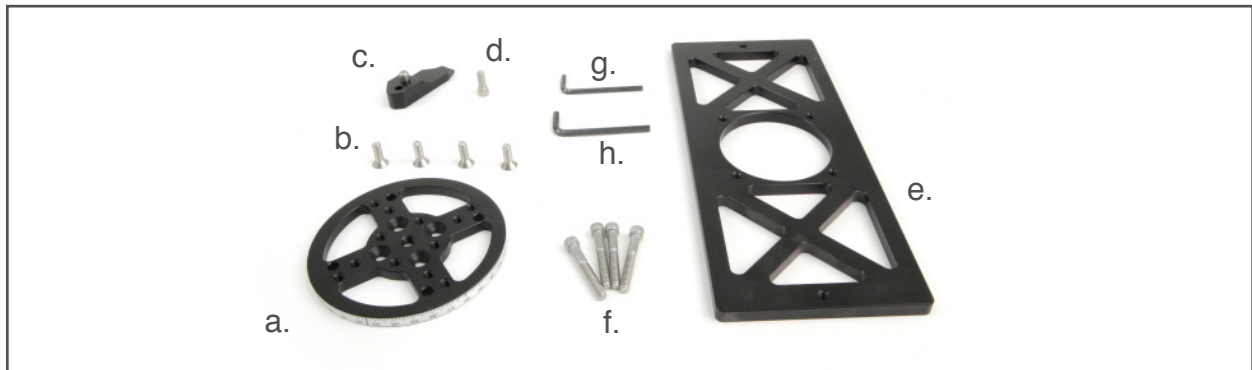


CineDrive® Turntable Conversion Kit Installation Guide

by *Kessler*

What's Included

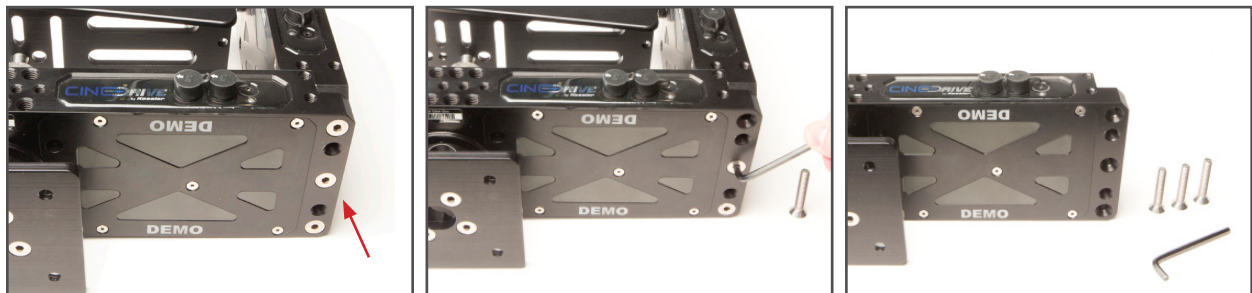
- a. (1) Turntable Degree Wheel with Sticker
- b. (4) Turntable Plate Mounting Screws 1/4"-20 x .75" Socket Countersunk Screw
- c. (1) Degree Indicator with 5/16" x 3/4" Stainless Dowel Pin
- d. (1) Degree Indicator Mounting Screw 1/4"-20 x .75" SHCS
- e. (1) Turntable Base
- f. (4) Turntable Base/Hub Mounting Screws 1/4"-20 x 1.75" SHCS
- g. (1) 5/32" Allen Wrench
- h. (1) 3/16" Allen Wrench



Pan Brick Removal and Preparation for Turntable Kit Installation:

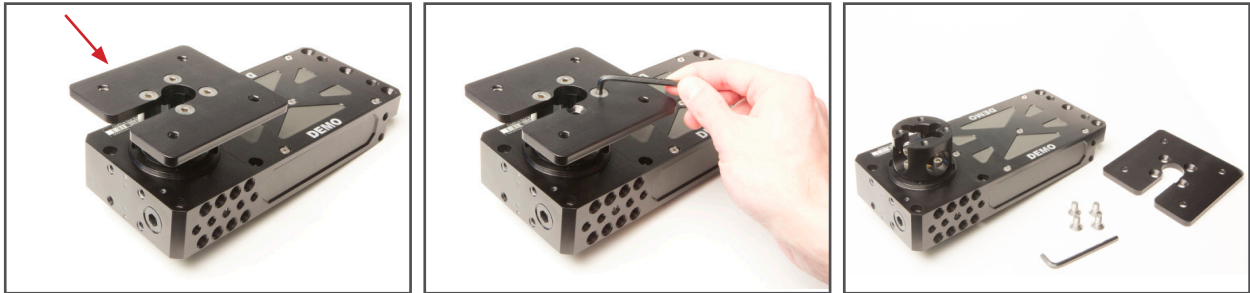
Step 1

Remove the three 1/4"-20x.75 flat head allen screws joining the pan brick and tilt bricks using a 5/32" hex allen wrench. Retain screws for possible future use.



Step 2

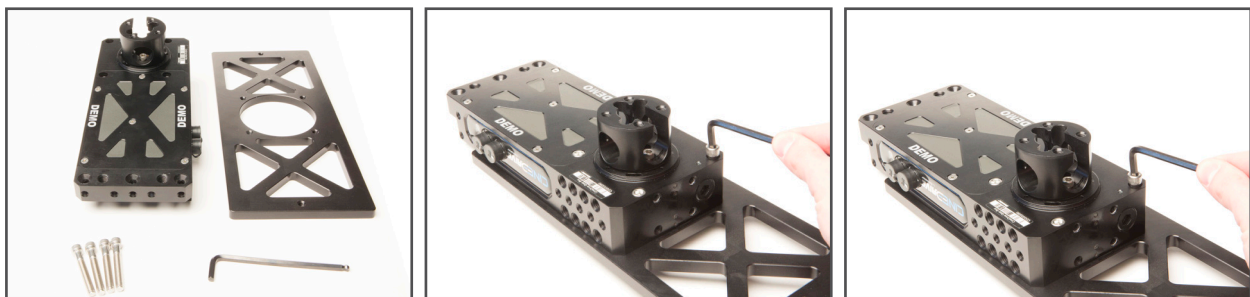
Remove the four Turntable Plate Mounting Screws holding the pan brick mounting plate to the pan hub. Retain screws and mounting plate for possible future use.



CineDrive® Turntable Kit Installation:

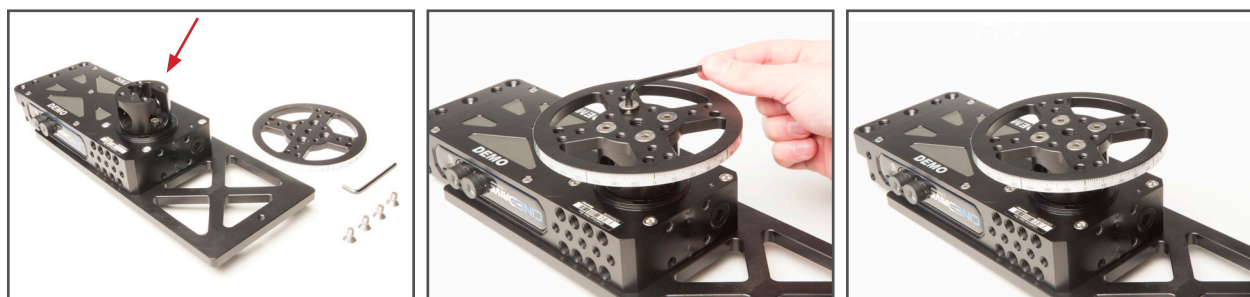
Step 1

Install supplied Turntable Base to the pan brick as shown using four Turntable Base/Hub Mounting Screws.



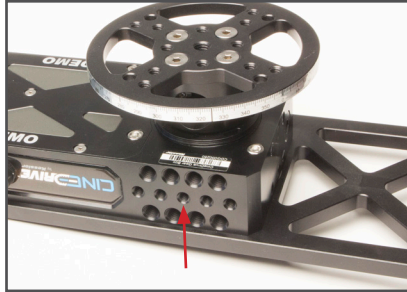
Step 2

Mount supplied Turntable Degree Wheel to pan brick hub (where original pan mounting plate was removed in step 2 above) using four Turntable Plate Mounting Screws. Position of Degree Wheel and zero degrees mark does not matter when installing Degree Wheel to hub.



Step 3

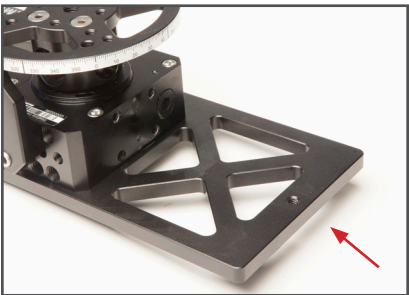
Install supplied Turntable Degree Indicator to pan brick in the location shown using one Degree Indicator Mounting Screw.



Optional Outrigger Feet Installation:

Step 1

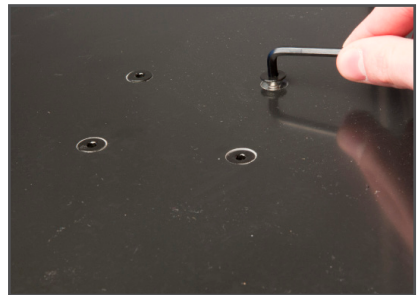
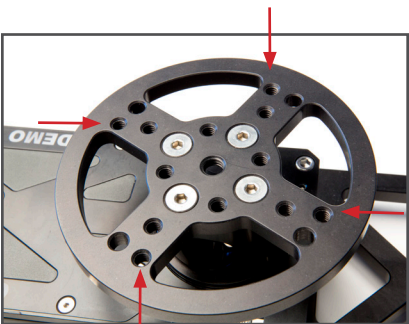
Install any optional Outrigger Feet by screwing to ends of turntable mounting base.



Optional Corian® Table Top Installation:

Step 2

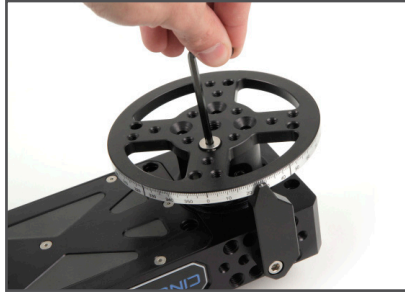
Install optional accessory Corian® Table Top to turntable dial wheel using four supplied



Optional Mounting Hub Installation:

Step 1

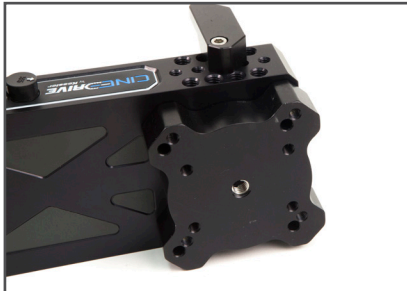
Remove the top Degree Wheel from the Turntable with the supplied 5/32" allen wrench



Step 2

(If Turntable Base is installed, remove before installing Mounting Hub.)

Line up the Mounting Hub with the bottom of the Turntable brick. Use the supplied Turntable Base/Hub Mounting Screws and 3/16" allen key to bolt the Hub to the brick.



Step 3

Re-install the top Degree Wheel.

